

HD-9



BendPak®

Four-Post Lifts

SKU# 5175861

9,000-lb. Capacity, Four-Post Lift, Standard Width

Questions? Contact BendPak's Sales Team

sales@bendpak.com | 1-800-253-2363

Monday - Friday, 7AM to 4:30PM PST

The Most Dependably Designed Four-Post Lift

The HD-9 Series of 9,000-lb. [four-post lifts](#) contains seven different lifting models. Each car lift is perfect for vehicle storage and service, whether you're working at the shop or from your home garage. Each model is available with optional casters, drip trays, jack platforms and more.

HD-9 Series Lifts

| SKU# | Model | Description |
|---------|---------|----------------------------------|
| 5175859 | HD-9XL | Standard Width / Extended Length |
| 5175860 | HD-9ST | Narrow Width |
| 5175862 | HD-9STX | Narrow Width / High Lift |
| 5175863 | HD-9XW | Standard Width / High Lift |

Features

- CE Approved and Certified. Meets or exceeds the standards prescribed by European Standard EN-1493
- Freestanding design
- Perfect for parking, storage and service
- Runways accommodate narrow and standard vehicles
- Runways include rail-kit for optional accessories
- Single hydraulic cylinder mounted underneath runway
- Fully enclosed lifting cables, safety locks and sheaves
- Internal anti-sway slider blocks in each column
- Oversized self-lubricating cable rollers
- Features heavy-duty 3/8" aircraft cable
- Rugged 1.25" roller axles
- Runways feature a durable matte finish
- Push-button pneumatic safety release
- Independent backup slack-cable safety latches
- Customizable power unit location
- Removable approach ramps
- Longer approach ramps for low-clearance vehicles
- Optional drive-thru ramps available
- Optional drip trays available
- Optional solid deck available to increase storage capacity
- Optional 4,500-lb. air / hydraulic rolling jacks available
- ETL Approved



Dual-hub cable sheaves

Dual-hub cable sheaves are more expensive to manufacture, but it's not a cost we push back onto you. They're necessary to prevent axles, sheaves and cables from burning out before they should. Our philosophy is that your car lift should be the last thing you worry about first thing in the morning.

Multi-level locking positions

Unique service technicians require unique servicing positions; with the HD-9, you can safely lock your four-post car lift at varied heights, so you're never crouching or reaching uncomfortably to perform auto maintenance. If you're raising the lift for parking purposes, that variation is going to come in handy, depending on how you stack your vehicles.

Heavy-duty aircraft cable

Each four-post lift comes with four lifting cables made from superior-grade stainless steel. Each individual cable is rated to handle 14,400 lbs. This makes their combined rating over 640% of the total capacity. These cables are hidden within the post columns for both the safety and overall streamlined look of the lift.

Note: An air supply (minimum 30 psi / 3 CFM) is required for the safety-lock mechanisms to disengage. It is solely the responsibility of the end-user to provide, install and maintain the air supply.

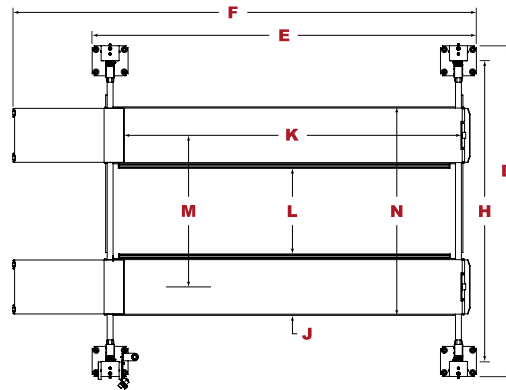
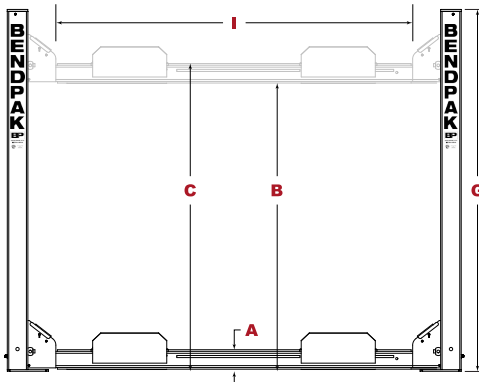
Not all BendPak lift models meet the standards as prescribed by ANSI/ALI ALCTV-2017 or ANSI/UL 201. Consult www.autolift.org for a complete list or contact BendPak via contact@bendpak.com.

BendPak®



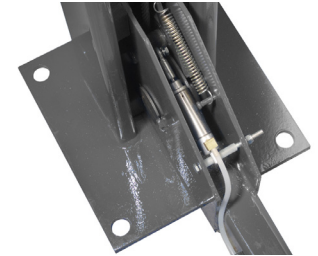
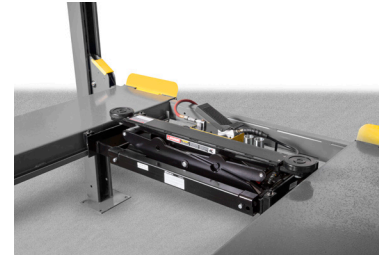
30440 Agoura Road Agoura Hills, CA 91301 USA

© 2023 BendPak Inc. All rights reserved.



HD-9

BendPak®



| Model | HD-9XL | HD-9ST | HD-9 | HD-9STX | HD-9XW |
|------------------------------------|---------------------------------------|------------------------|---------------------------------------|------------------------|---------------------------------------|
| Style | Standard Width / Ext. Length | Narrow Width | Standard Width | Narrow / High Lift | Standard Width / High Lift |
| SKU# | 5175859 | 5175860 | 5175861 | 5175862 | 5175863 |
| Lifting Capacity | 9,000 lbs. (4,082 kg) | 9,000 lbs. (4,082 kg) | 9,000 lbs. (4,082 kg) | 9,000 lbs. (4,082 kg) | 9,000 lbs. (4,082 kg) |
| A - Min. Runway Height | 5" (127 mm) | 5" (127 mm) | 5" (127 mm) | 5" (127 mm) | 5" (127 mm) |
| B - Max. Rise | 70" (1,778 mm) | 70" (1,778 mm) | 70" (1,778 mm) | 82" (2,083 mm) | 82" (2,083 mm) |
| C - Max. Lifting Height | 74.5" (1,892 mm) | 74.5" (1,892 mm) | 74.5" (1,892 mm) | 86.5" (2,197 mm) | 86.5" (2,197 mm) |
| D - Overall Width | 110.25" (2,800 mm) | 100.25" (2,546 mm) | 110.25" (2,800 mm) | 100.25" (2,546 mm) | 110.25" (2,800 mm) |
| E - Outside Length | 198" (5,029 mm) | 174" (4,420 mm) | 174" (4,420 mm) | 198" (5,029 mm) | 198" (5,029 mm) |
| F - Overall Length | 224" (5,690 mm) | 200" (5,080 mm) | 200" (5,080 mm) | 224" (5,690 mm) | 224" (5,690 mm) |
| G - Height of Columns | 88" (2,235 mm) | 88" (2,235 mm) | 88" (2,235 mm) | 100" (2,540 mm) | 100" (2,540 mm) |
| H - Width Between Columns | 100.25" (2,555 mm) | 89.75" (2,280 mm) | 100.25" (2,555 mm) | 89.75" (2,280 mm) | 100.25" (2,555 mm) |
| I - Drive-Thru Clearance | 86.5" (2,197 mm) | 76.5" (1,943 mm) | 86.5" (2,197 mm) | 76.5" (1,943 mm) | 86.5" (2,197 mm) |
| J - Runway Width | 19" (483 mm) | 19" (483 mm) | 19" (483 mm) | 19" (483 mm) | 19" (483 mm) |
| K - Length of Runways | 188" (4,775 mm) | 164" (4,166 mm) | 164" (4,166 mm) | 188" (4,775 mm) | 188" (4,775 mm) |
| L - Width Between Runways | 37.5" (952 mm) - 44-3/8" (1,127 mm) | 37.5" (952 mm) | 37.5" (952 mm) - 44-3/8" (1,127 mm) | 37.5" (952 mm) | 37.5" (952 mm) - 44-3/8" (1,127 mm) |
| M - Runway Centerline | 56.5" (1,435 mm) - 63-3/8" (1,610 mm) | 56.5" (1,435 mm) | 56.5" (1,435 mm) - 63-3/8" (1,610 mm) | 56.5" (1,435 mm) | 56.5" (1,435 mm) - 63-3/8" (1,610 mm) |
| N - Outside Edge of Runways | 75.5" (1,918 mm) - 82-3/8" (2,092 mm) | 75.5" (1,918 mm) | 75.5" (1,918 mm) - 82-3/8" (2,092 mm) | 75.5" (1,918 mm) | 75.5" (1,918 mm) - 82-3/8" (2,092 mm) |
| Min Wheelbase @ Capacity | 135" (3,429 mm) | 115" (2,921 mm) | 115" (2,921 mm) | 135" (3,429 mm) | 135" (3,429 mm) |
| Min Wheelbase @ 75% | 115" (2,921 mm) | 100" (2,540 mm) | 100" (2,540 mm) | 115" (2,921 mm) | 115" (2,921 mm) |
| Min Wheelbase @ 50% | 95" (2,413 mm) | 85" (2,159 mm) | 85" (2,159 mm) | 95" (2,413 mm) | 95" (2,413 mm) |
| Min Wheelbase @ 25% | 80" (2,032 mm) | 70" (1,778 mm) | 70" (1,778 mm) | 80" (2,032 mm) | 80" (2,032 mm) |
| Time to Full Rise | 50 seconds | 50 seconds | 50 seconds | 50 seconds | 50 seconds |
| Locking Positions | every 4" (102 mm) | every 4" (102 mm) | every 4" (102 mm) | every 4" (102 mm) | every 4" (102 mm) |
| Lock Spacing | 12 | 12 | 12 | 15 | 15 |
| Motor | 220 VAC / 60 Hz / 1 Ph | 220 VAC / 60 Hz / 1 Ph | 220 VAC / 60 Hz / 1 Ph | 220 VAC / 60 Hz / 1 Ph | 220 VAC / 60 Hz / 1 Ph |

BendPak®



30440 Agoura Road Agoura Hills, CA 91301 USA

TOLL FREE: 1-800-253-2363